

## **Package leaflet: Information for the user**

### **Gedarel extra 30/150 micrograms film-coated tablets**

Ethinylestradiol and Desogestrel

#### **Important things to know about combined hormonal contraceptives (CHCs):**

- They are one of the most reliable reversible methods of contraception if used correctly.
- They slightly increase the risk of having a blood clot in the veins and arteries, especially in the first year or when restarting a combined hormonal contraceptive following a break of 4 or more weeks.
- Please be alert and see your doctor if you think you may have symptoms of a blood clot (see section 2 “Blood clots”).

#### **Read all of this leaflet carefully before you start taking this medicine because it contains important information for you.**

- Keep this leaflet. You may need to read it again.
- If you have any further questions, ask your doctor or pharmacist.
- This medicine has been prescribed for you only. Do not pass it on to others. It may harm them.
- If you get any side effects, talk to your doctor or pharmacist. This includes any possible side effects not listed in this leaflet. See section 4.

#### **What is in this leaflet**

1. What Gedarel extra is and what it is used for
2. What you need to know before you take Gedarel extra
3. How to take Gedarel extra
4. Possible side effects
5. How to store Gedarel extra
6. Contents of the pack and other information

#### **1. What Gedarel extra is and what it is used for**

Gedarel extra is a combined oral contraceptive, also called the pill. It contains two types of female hormones: a progestogen, desogestrel, and an oestrogen, ethinylestradiol in a low dose. These help to stop you from getting pregnant, just as your natural hormones would stop you conceiving again when you are already pregnant.

The COC pill protects you against getting pregnant in three ways. These hormones

1. stop the ovary from releasing an egg each month (ovulation).
2. also thicken the fluid (at the neck of the womb making it more difficult for the sperm to reach the egg.
3. alter the lining of the womb to make it less likely to accept a fertilised egg.

#### **General information**

If taken correctly, the pill is an effective reversible form of contraception. However, in certain circumstances the effectiveness of the pill may reduce or you should stop taking the pill (see later). In these cases either do not have sex, or use extra contraceptive precautions (such as condoms or spermicides) during intercourse to ensure effective contraception.

Do not use rhythm or temperature methods. These methods can be unreliable because Gedarel extra alters the monthly changes of body temperature and of cervical mucus.

Remember, COC pills like Gedarel extra will not protect you against sexually-transmitted diseases (such as AIDS). Only condoms can help to do this.

#### **2. What you need to know before you take Gedarel extra**

## General notes

Before you start using Gedarel extra you should read the information on blood clots in section 2. It is particularly important to read the symptoms of a blood clot – see section 2 “Blood clots”.

Before you can begin taking Gedarel extra, your doctor will ask you some questions about your personal health history and that of your close relatives. The doctor will also measure your blood pressure, and depending upon your personal situation, may also carry out some other tests.

## Do not take Gedarel extra

You should not use Gedarel extra if you have any of the conditions listed below. If you do have any of the conditions listed below, you must tell your doctor. Your doctor will discuss with you what other form of birth control would be more appropriate.

- if you have (or have ever had) a blood clot in a blood vessel of your legs (deep vein thrombosis, DVT), your lungs (pulmonary embolus, PE) or other organs;
- if you know you have a disorder affecting your blood clotting – for instance, protein C deficiency, protein S deficiency, antithrombin-III deficiency, Factor V Leiden or antiphospholipid antibodies;
- if you need an operation or if you are off your feet for a long time (see section ‘Blood clots’);
- if you have ever had a heart attack or a stroke;
- if you have (or have ever had) angina pectoris (a condition that causes severe chest pain and may be a first sign of a heart attack) or transient ischaemic attack [TIA – temporary stroke symptoms];
- if you have any of the following diseases that may increase your risk of a clot in the arteries:
  - severe diabetes with blood vessel damage
  - very high blood pressure
  - a very high level of fat in the blood (cholesterol or triglycerides)
  - a condition known as hyperhomocysteinaemia;
- if you have (or have ever had) a type of migraine called ‘migraine with aura’;
- if you have (had) an inflammation of the pancreas (pancreatitis)
- if you have or have had in the past a liver disease and your liver function is still not normal.
- if you have or have had a tumour in the liver.
- if you have (had) or if you are suspected to having breast cancer or cancer of the genital organs.
- if you have any unexplained bleeding from the vagina.
- if you are pregnant or think you might be,
- if you have endometrial hyperplasia (a condition characterised by overgrowth of the lining of the uterus),
- if you are allergic to ethinylestradiol or desogestrel, or any of the other ingredients of this medicine (listed in section 6). This can be recognised by itching, rash or swelling.

Do not use Gedarel extra if you have hepatitis C and are taking the medicinal products containing ombitasvir/paritaprevir/ritonavir, dasabuvir, glecaprevir/pibrentasvir or sofosbuvir/velpatasvir/voxilaprevir (see also in section “Other medicines and Gedarel extra”).

## Warnings and precautions

Talk to your doctor or pharmacist before taking Gedarel extra.

When should you contact your doctor?

### Seek urgent medical attention

- if you notice possible signs of a blood clot that may mean you are suffering from a blood clot in the leg (i.e. deep vein thrombosis), a blood clot in the lung (i.e. pulmonary embolism), a heart attack or a stroke (see ‘Blood clots’ (thrombosis) section below).

For a description of the symptoms of these serious side effects please go to “How to recognise a blood clot”.

In some situations you need to take special care while using Gedarel extra or any other combined hormonal contraceptive, and it may be necessary that you are regularly checked by your doctor. If any of the following conditions applies to you, you must inform your doctor before starting to use Gedarel extra.

**Tell your doctor if any of the following conditions apply to you.**

If the condition develops, or gets worse while you are using Gedarel extra, you should also tell your doctor.

- if you experience symptoms of angioedema such as swollen face, tongue and/or throat and/or difficulty swallowing or hives potentially with difficulty breathing contact a doctor immediately. Products containing estrogens may cause or worsen the symptoms of hereditary and acquired angioedema.
- if you have Crohn’s disease or ulcerative colitis (chronic inflammatory bowel disease);
- if you have systemic lupus erythematosus (SLE –; a disease affecting your natural defence system);
- if you have haemolytic uraemic syndrome (HUS - a disorder of blood clotting causing failure of the kidneys);
- if you have sickle cell anaemia (an inherited disease of the red blood cells);
- if you have elevated levels of fat in the blood (hypertriglyceridaemia) or a positive family history for this condition. Hypertriglyceridaemia has been associated with an increased risk of developing pancreatitis (inflammation of the pancreas);
- if you need an operation, or you are off your feet for a long time (see in section 2 ‘Blood clots’);
- if you have just given birth you are at an increased risk of blood clots. You should ask your doctor how soon after delivery you can start taking Gedarel extra;
- if you have an inflammation in the veins under the skin (superficial thrombophlebitis);
- if you have varicose veins;
- if a close relative has or has had breast cancer;
- if you have a disease of the liver or the gallbladder;
- if you have diabetes;
- if you have depression or mood changes;
- if you have epilepsy (see “Other medicines and Gedarel extra”);
- if you have a disease that first appeared during pregnancy or earlier use of sex hormones (for example, hearing loss, porphyria (a disease of the blood), gestational herpes (skin rash with vesicles during pregnancy), Sydenham’s chorea (a disease of the nerves in which sudden movements of the body occur);
- if you have or have ever had chloasma (golden brown pigment patches, so called “pregnancy patches”, especially on the face). If this is the case, avoid direct exposure to sunlight or ultraviolet light.

**BLOOD CLOTS**

Using a combined hormonal contraceptive such as Gedarel extra increases your risk of developing a blood clot compared with not using one. In rare cases a blood clot can block blood vessels and cause serious problems.

Blood clots can develop

- in veins (referred to as a ‘venous thrombosis’, ‘venous thromboembolism’ or VTE)
- in the arteries (referred to as an ‘arterial thrombosis’, ‘arterial thromboembolism’ or ATE).

Recovery from blood clots is not always complete. Rarely, there may be serious lasting effects or, very rarely, they may be fatal.

**It is important to remember that the overall risk of a harmful blood clot due to Gedarel extra is small.**

**HOW TO RECOGNISE A BLOOD CLOT**

Seek urgent medical attention if you notice any of the following signs or symptoms.

Are you experiencing any of these signs?	What are you possibly
--	-----------------------

	suffering from?
<ul style="list-style-type: none"> <li>swelling of one leg or along a vein in the leg or foot especially when accompanied by: <ul style="list-style-type: none"> <li>pain or tenderness in the leg which may be felt only when standing or walking</li> <li>increased warmth in the affected leg</li> <li>change in colour of the skin on the leg e.g. turning pale, red or blue</li> </ul> </li> </ul>	Deep vein thrombosis
<ul style="list-style-type: none"> <li>sudden unexplained breathlessness or rapid breathing;</li> <li>sudden cough without an obvious cause, which may bring up blood;</li> <li>sharp chest pain which may increase with deep breathing;</li> <li>severe light headedness or dizziness;</li> <li>rapid or irregular heartbeat;</li> <li>severe pain in your stomach</li> </ul> <p>If you are unsure, talk to a doctor as some of these symptoms such as coughing or being short of breath may be mistaken for a milder condition such as a respiratory tract infection (e.g. a 'common cold').</p>	Pulmonary embolism
<p>Symptoms most commonly occur in one eye:</p> <ul style="list-style-type: none"> <li>immediate loss of vision or</li> <li>painless blurring of vision which can progress to loss of vision</li> </ul>	Retinal vein thrombosis (blood clot in the eye)
<ul style="list-style-type: none"> <li>chest pain, discomfort, pressure, heaviness;</li> <li>sensation of squeezing or fullness in the chest, arm or below the breastbone;</li> <li>fullness, indigestion or choking feeling;</li> <li>upper body discomfort radiating to the back, jaw, throat, arm and stomach;</li> <li>sweating, nausea, vomiting or dizziness;</li> <li>extreme weakness, anxiety, or shortness of breath;</li> <li>rapid or irregular heartbeats</li> </ul>	Heart attack
<ul style="list-style-type: none"> <li>sudden weakness or numbness of the face, arm or leg, especially on one side of the body;</li> <li>sudden confusion, trouble speaking or understanding;</li> <li>sudden trouble seeing in one or both eyes;</li> <li>sudden trouble walking, dizziness, loss of balance or coordination;</li> <li>sudden, severe or prolonged headache with no known cause;</li> <li>loss of consciousness or fainting with or without seizure.</li> </ul> <p>Sometimes the symptoms of stroke can be brief with an almost immediate and full recovery, but you should still seek urgent medical attention as you may be at risk of another stroke.</p>	Stroke
<ul style="list-style-type: none"> <li>swelling and slight blue discolouration of an extremity;</li> <li>severe pain in your stomach (acute abdomen)</li> </ul>	Blood clots blocking other blood vessels

## BLOOD CLOTS IN A VEIN

What can happen if a blood clot forms in a vein?

- The use of combined hormonal contraceptives has been connected with an increase in the risk of blood clots in the vein (venous thrombosis). However, these side effects are rare. Most frequently, they occur in the first year of use of a combined hormonal contraceptive.
- If a blood clot forms in a vein in the leg or foot it can cause a deep vein thrombosis (DVT).
- If a blood clot travels from the leg and lodges in the lung it can cause a pulmonary embolism.
- Very rarely a clot may form in a vein in another organ such as the eye (retinal vein thrombosis).

**When is the risk of developing a blood clot in a vein highest?**

The risk of developing a blood clot in a vein is highest during the first year of taking a combined hormonal contraceptive for the first time. The risk may also be higher if you restart taking a combined hormonal contraceptive (the same product or a different product) after a break of 4 weeks or more. After the first year, the risk gets smaller but is always slightly higher than if you were not using a combined hormonal contraceptive.

When you stop Gedarel extra your risk of a blood clot returns to normal within a few weeks.

**What is the risk of developing a blood clot?**

The risk depends on your natural risk of VTE and the type of combined hormonal contraceptive you are taking.

The overall risk of a blood clot in the leg or lung (DVT or PE) with Gedarel extra is small.

- Out of 10,000 women who are not using any combined hormonal contraceptive and are not pregnant, about 2 will develop a blood clot in a year.
- Out of 10,000 women who are using a combined hormonal contraceptive that contains levonorgestrel, norethisterone, or norgestimate about 5-7 will develop a blood clot in a year.
- Out of 10,000 women who are using a combined hormonal contraceptive that contains desogestrel, such as Gedarel extra between about 9 and 12 women will develop a blood clot in a year.
- The risk of having a blood clot will vary according to your personal medical history (see “Factors that increase your risk of a blood clot” below)

	<b>Risk of developing a blood clot in a year</b>
Women who are <b>not using</b> a combined hormonal pill/patch/ring and are not pregnant	About 2 out of 10,000 women
Women using a combined hormonal contraceptive pill containing <b>levonorgestrel, norethisterone or norgestimate</b>	About 5-7 out of 10,000 women
Women using Gedarel extra	About 9-12 out of 10,000 women

**Factors that increase your risk of a blood clot in a vein**

The risk of a blood clot with Gedarel extra is small but some conditions will increase the risk. Your risk is higher:

- if you are very overweight (body mass index or BMI over 30 kg/m<sup>2</sup>);
- if one of your immediate family has had a blood clot in the leg, lung or other organ at a young age (e.g. below the age of about 50). In this case you could have a hereditary blood clotting disorder;
- if you need to have an operation, or if you are off your feet for a long time because of an injury or illness, or you have your leg in a cast. The use of Gedarel extra may need to be stopped several weeks before surgery or while you are less mobile. If you need to stop Gedarel extra ask your doctor when you can start using it again.
- as you get older (particularly above about 35 years);
- if you gave birth less than a few weeks ago.

The risk of developing a blood clot increases the more conditions you have.

Air travel (>4 hours) may temporarily increase your risk of a blood clot, particularly if you have some of the other factors listed.

It is important to tell your doctor if any of these conditions apply to you, even if you are unsure. Your doctor may decide that Gedarel extra needs to be stopped.

If any of the above conditions change while you are using Gedarel extra, for example a close family member experiences a thrombosis for no known reason; or you gain a lot of weight, tell your doctor.

## **BLOOD CLOTS IN AN ARTERY**

### **What can happen if a blood clot forms in an artery?**

Like a blood clot in a vein, a clot in an artery can cause serious problems. For example, it can cause a heart attack or a stroke.

### **Factors that increase your risk of a blood clot in an artery**

It is important to note that the risk of a heart attack or stroke from using Gedarel extra is very small but can increase:

- with increasing age (beyond about 35 years);
- **if you smoke.** When using a combined hormonal contraceptive like Gedarel extra you are advised to stop smoking. If you are unable to stop smoking and are older than 35 your doctor may advise you to use a different type of contraceptive;
- if you are overweight;
- if you have high blood pressure;
- if a member of your immediate family has had a heart attack or stroke at a young age (less than about 50). In this case you could also have a higher risk of having a heart attack or stroke;
- if you, or someone in your immediate family, have a high level of fat in the blood (cholesterol or triglycerides);
- if you get migraines, especially migraines with aura;
- if you have a problem with your heart (valve disorder, disturbance of the rhythm called atrial fibrillation);
- if you have diabetes.

If you have more than one of these conditions or if any of them are particularly severe the risk of developing a blood clot may be increased even more.

If any of the above conditions change while you are using Gedarel extra, for example you start smoking, a close family member experiences a thrombosis for no known reason; or you gain a lot of weight, tell your doctor.

## **The pill and cancer**

An increased risk of cervical carcinoma in long-term users of COCs has been reported in some epidemiological studies, but there is controversy about the extent to which this finding is attributable to the confounding effects of sexual behaviour and other factors such as human papilloma virus (HPV).

Breast cancer has been observed slightly more often in women using combined pills, but it is not known whether this is caused by the treatment. For example it may be that more tumours are detected in women on combined pills because they are examined by their doctor more often. The occurrence of breast tumours becomes gradually less after stopping the COCs. It is important to regularly check your breasts and you should contact your doctor if you feel any lump.

In rare cases, benign liver tumours, and in even fewer cases malignant liver tumours have been reported in COC users. Contact your doctor if you have unusual severe abdominal pain.

## **Psychiatric disorders**

Some women using hormonal contraceptives including Gedarel extra have reported depression or depressed mood. Depression can be serious and may sometimes lead to suicidal thoughts. If you experience mood changes and depressive symptoms contact your doctor for further medical advice as soon as possible.

### **Bleeding between periods**

During the first few months that you are taking Gedarel extra, you may have unexpected bleeding (bleeding outside the gap week). If this bleeding lasts longer than a few months, or if it begins after some months, your doctor must investigate the cause.

### **What you must do if no bleeding occurs in the gap week**

If you have taken all the tablets correctly, have not had vomiting or severe diarrhoea and you have not taken any other medicines, it is highly unlikely that you are pregnant.

If the expected bleeding does not happen twice in succession, you may be pregnant. Contact your doctor immediately. Do not start the next strip until you are sure that you are not pregnant.

### **Children and adolescents**

The safety and efficacy of Gedarel extra in adolescents below 18 years have not yet been established. No data are available.

### **Other medicines and Gedarel extra**

Tell your doctor or pharmacist if you are taking, have recently taken or might take any other medicines.

Also tell any other doctor or dentist who prescribes another medicine (or the dispensing pharmacist) that you use Gedarel extra. They can tell you if you need to take additional contraceptive precautions (for example condoms) and if so, for how long, or if you may need to change the dose of other medicines you use.

Do not use Gedarel extra if you have Hepatitis C and are taking the medicinal products containing ombitasvir/paritaprevir/ritonavir, dasabuvir, glecaprevir/pibrentasvir or sofosbuvir/velpatasvir/voxilaprevir, as these products may cause increases in liver function blood test results (increase in ALT liver enzyme).

Your doctor will prescribe another type of contraceptive prior to start of the treatment with these medicinal products.

Gedarel extra can be restarted approximately 2 weeks after completion of this treatment. See section "Do not use Gedarel extra".

Some medicines can have an influence on the blood levels of Gedarel extra and can make it **less effective in preventing pregnancy**, or can cause unexpected bleeding. These include:

- medicines used for the treatment of
  - epilepsy (phenytoin, phenobarbital, primidone, carbamazepine, oxcarbazepine, topiramate, felbamate),
  - tuberculosis (e.g. rifampicin, rifabutin),
  - HIV infections (so-called protease inhibitors and non-nucleoside reverse transcriptase inhibitors such as ritonavir, efavirenz, nevirapine, nelfinavir),
  - hepatitis C virus infections (boceprevir, telaprevir),
  - other infections (e.g. griseofulvin),
  - increase of blood pressure in the lung vasculature (bosentan),
- the herbal remedy St. John's wort (*Hypericum perforatum*). If you want to use herbal products containing St. John's wort while you are already using Gedarel extra you should consult your doctor first.

Interactions of Gedarel extra with other medicines may likewise lead to increased or pronounced occurrence of side effects.

The following medicines may impair the tolerability of Gedarel extra:

- itraconazole, ketoconazole, fluconazole (used to treat fungal infections),
- calcium channel blockers, such as diltiazem (used to treat certain heart diseases and high blood pressure),
- macrolide antibiotics such as clarithromycin, erythromycin (used to treat bacterial infections),
- etoricoxib (for the treatment of arthritis, arthrosis).

Gedarel may affect other concomitantly administered medicines such as medicines containing active substances:

- ciclosporin (used for the treatment of suppression of tissue rejection following transplant surgery),
- lamotrigine (anti-epileptic medicine; concomitant use with Gedarel extra could lead to an increased frequency of seizures),
- theophylline (used to treat breathing problems).
- tizanidine (used for the treatment of muscle spasticity),
- levothyroxine (used for the treatment of hormone deficiency).

*Ask your doctor or pharmacist for advice before taking any medicine.*

### **Before you have any laboratory tests**

Tell your doctor or the laboratory staff that you are taking the pill, because oral contraceptives can affect the results of some tests.

### **Pregnancy and breast-feeding**

If you are pregnant or breast-feeding, think you may be pregnant or are planning to have a baby, ask your doctor or pharmacist for advice before taking this medicine.

You must not use Gedarel extra when you are pregnant. If you become pregnant or you think you might be pregnant, stop taking Gedarel extra and talk to your doctor immediately.

Gedarel extra is not recommended during breast-feeding. If you are breast feeding and want to take the pill, you should discuss this with your doctor.

### **Driving and using machines**

Gedarel extra has no or negligible effect on the ability to drive and use machines.

### **Gedarel extra contains lactose.**

If you have been told by your doctor that you have an intolerance to some sugars, contact your doctor before taking this medicinal product.

## **3. How to take Gedarel extra**

Always take this medicine exactly as your doctor has told you. Check with your doctor if you are not sure. Each pack of Gedarel extra contains 1 calendar strip of 21 coated tablets or 3, 6, 13 calendar strips of 21 coated tablets. The calendar strip has been designed to help you remember to take your tablets.

**The strip is marked with the day of the week on which each tablet should be taken. Following the direction of the arrow printed on the strip you should take one tablet each day for 21 days until the strip is empty.**

**Then you have 7 days when you do not take a tablet. During the 7 tablet-free days, on day 2 or 3, you will have menstruation-like withdrawal bleeding, i.e. your “monthly period”.**

**Start your next strip on the 8th day (following the 7 tablet-free days) – even if the bleeding has not yet ended. As long as you take Gedarel extra correctly, you will always start each new strip on the same day of the week, and you will always have your monthly period on the same day of the week in each month (in every 28 days).**

**You should try to take your tablet at about the same time each day.** You may find it easiest to take it either last thing at night or first thing in the morning.



**Swallow each tablet whole, with water if necessary.**

### **Starting the first pack**

#### ***If no oral contraception has been used during the preceding cycle***

Take the first tablet on the first day of your period. This is the first day of your cycle - the day when bleeding starts. Take a tablet marked for that day of the week (for example, if it is Tuesday when your period starts, take the tablet marked Tuesday on the pack). Follow the direction of the arrow and continue taking one tablet each day until the strip is empty.

If you start on day 2-5 of your period, you should use another method of contraception as well, such as the condom, for the first seven tablet-taking days, but this is only for the first pack.

#### ***Changing to Gedarel extra from another COC, or combined contraceptive vaginal ring or patch***

You should start taking Gedarel extra preferably on the day after the last active tablet (the last tablet containing the active substance) of your previous COC, but at the latest on the day following the usual tablet-free interval or following the last placebo tablet of your previous COC.

In case a vaginal ring or a transdermal patch has been used, the woman should start using Gedarel extra preferably on the day of removal, but at the latest when the next application would have been due.

#### ***Changing to Gedarel extra from a progestogen- product (progestogen-only-pills, injection, implant or progestogen releasing IUD)***

You may switch any day from the progestogen-only tablet (from an implant or the IUD on the day of its removal, from an injectable when the next injection would be due) but in all of these cases you must use extra protective measures (for example, a condom) for the first 7 days of tablet-taking.

#### ***After a miscarriage***

Follow the advice of your doctor.

#### ***After having a baby***

After having a baby, you can start Gedarel extra between 21 and 28 days later. If you start later than day 28, you must use a so-called barrier method (for example, a condom) during the first seven days of Gedarel extra use. If, after having a baby, you have had intercourse before starting Gedarel extra (again), you must first be sure that you are not pregnant or you must wait until the next menstrual bleed.

Let your doctor advise you in case you are not sure when to start.

#### ***If you are breastfeeding and want to start Gedarel extra (again) after having a baby.***

Read the section on "Pregnancy and breast feeding".

### **If you take more Gedarel extra than you should**

There are no reports of serious harmful results of taking too many Gedarel extra tablets. If you take several tablets at once then you may have symptoms of nausea or vomiting. Young girls may have bleeding from the vagina. If you have taken too many Gedarel extra tablets, or you discover that a child has taken some, ask your doctor or pharmacist for advice.

### **If you forget to take Gedarel extra**

- If you are less than 12 hours late taking a tablet, the protection from pregnancy is not reduced. Take the tablet as soon as you remember and then take the following tablets again at the usual time.
- If you are more than 12 hours late taking a tablet, the protection from pregnancy may be reduced. The greater the number of tablets that you have forgotten, the greater is the risk that the protection from pregnancy is reduced.

The risk of incomplete protection against pregnancy is greatest if you forget a tablet at the beginning or the end of the strip. Therefore, you should adhere to the following rules (see also the diagram below):

### **More than one tablet forgotten in this strip**

Contact your doctor.

#### **One tablet forgotten in week 1**

Take the forgotten tablet as soon as you remember, even if that means that you have to take two tablets at the same time. Take the tablets again at the usual time and use extra precautions for the next 7 days, for example, a condom. If you have had intercourse in the week before the oversight or you have forgotten to start a new strip after the tablet-free period, you must realize that there is a risk of pregnancy. In that case, contact your doctor

#### **One tablet forgotten in week 2**

Take the forgotten tablet as soon as you remember, even if that means that you have to take two tablets at the same time. Take the tablets again at the usual time. The protection from pregnancy is not reduced, and you do not need to take extra precautions.

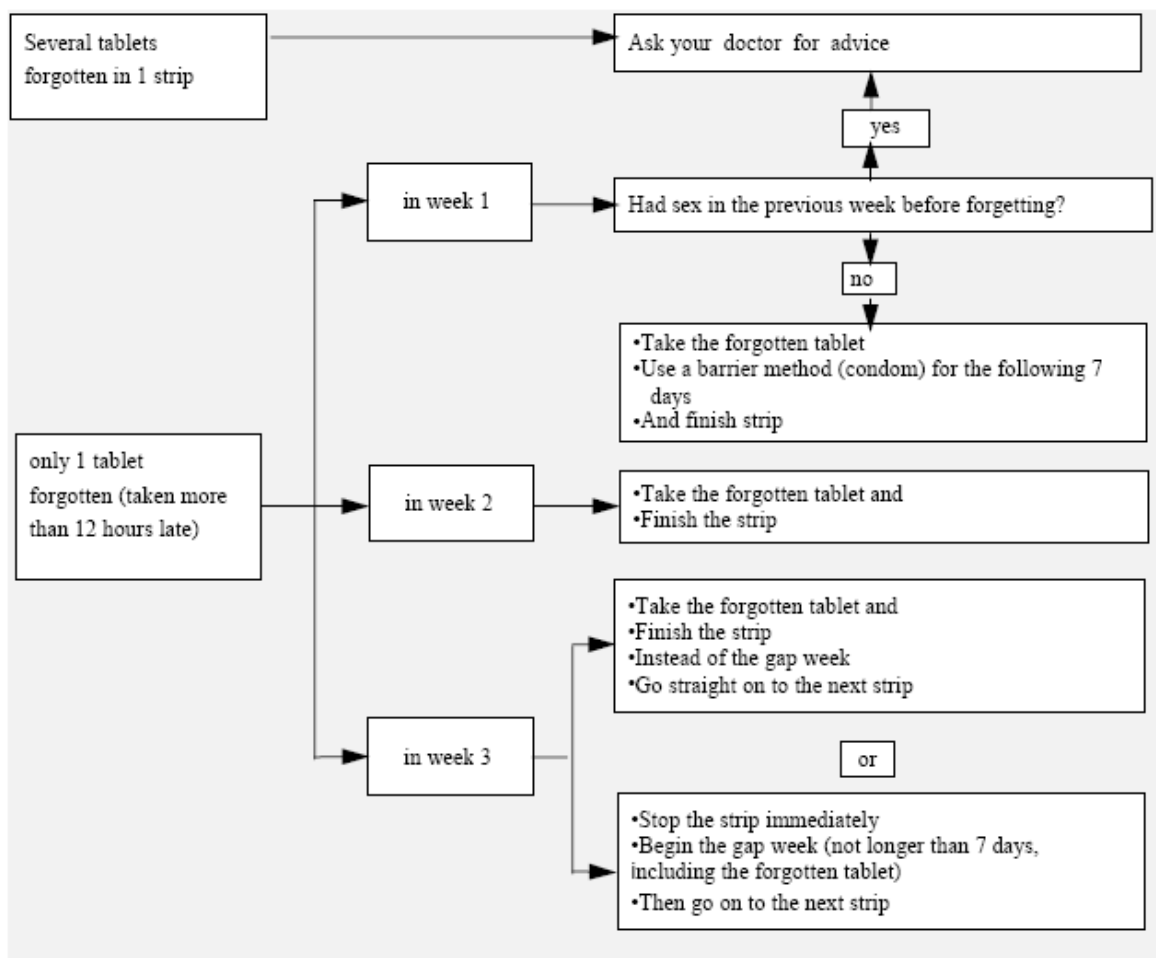
#### **One tablet forgotten in week 3**

You can choose between two possibilities:

1. Take the forgotten tablet as soon as you remember, even if that means that you have to take two tablets at the same time. Take the tablets again at the usual time. Instead of the tablet-free period go straight on to the next strip.  
Most likely, you will have a period (withdrawal bleed) at the end of the second strip but you may also have spotting or breakthrough bleeding during the second strip.
2. You can also stop the strip and go directly to the tablet-free period of 7 days (**record the day on which you forgot your tablet**). If you want to start a new strip on your fixed start day, make the tablet-free period less than 7 days.

If you follow either of these two recommendations, you will remain protected against pregnancy.

If you have forgotten any of the tablets in a strip, and you do not have bleeding in the first tablet-free period, this may mean that you are pregnant. You must contact your doctor before you go on to the next strip.



### What to do in case of vomiting or severe diarrhoea

If you vomit within 3-4 hours of taking a tablet or you have severe diarrhoea, there is a risk that the active substances in the tablet are not fully absorbed into your body. The situation is similar to if you forget a tablet. After vomiting or diarrhoea, you must take another tablet from a reserve strip as soon as possible. If possible, take it within 12 hours of when you normally take your tablet. If this is not possible or 12 hours have passed, you should follow the advice given under “If you forget to take Gedarel extra”.

### Delay of menstrual period: what you must know

Even if not recommended, delay of your menstrual period (withdrawal bleed) is possible by going straight on to a new strip of Gedarel extra instead of the tablet-free period, to the end of the second strip. You may experience spotting (drops or flecks of blood) or breakthrough bleeding while using this second strip. After the usual tablet-free period of 7 days, continue with the following strip.

***You might ask your doctor for advice before deciding to delay your menstrual period.***

### Change of the first day of your menstrual period: what you must know

If you take the tablets according to the instructions, then your menstrual period/withdrawal bleed will begin in the tablet-free week. If you have to change this day, you do this by making the tablet-free period shorter (but never longer!). For example, if your tablet-free period begins on a Friday, and you want to change this to a Tuesday (3 days earlier) you must start a new strip 3 days earlier than usual. If you make the tablet-free period very short (for example, 3 days or less) then it may be that you do not have any bleeding during this tablet-free period. You may then experience spotting (droplets or flecks of blood) or breakthrough bleeding.

***If you are not sure how to proceed, contact your doctor for advice.***

### If you stop taking Gedarel extra

You can stop taking Gedarel extra whenever you want. If you do not want to become pregnant, ask your doctor for advice about other reliable methods of birth control.  
If you have any further questions on the use of this product, ask your doctor or pharmacist

#### **4. Possible side effects**

Like all medicines, this medicine can cause side effects, although not everybody gets them. If you get any side effect, particularly if severe and persistent, or have any change to your health that you think may be due to Gedarel extra, please talk to your doctor.

Contact a doctor immediately if you experience any of the following symptoms of angioedema: swollen face, tongue and/or throat and/or difficulty swallowing or hives potentially with difficulty breathing (see also section “Warnings and precautions”).

An increased risk of blood clots in your veins (venous thromboembolism (VTE)) or blood clots in your arteries (arterial thromboembolism (ATE)) is present for all women taking combined hormonal contraceptives. For more detailed information on the different risks from taking combined hormonal contraceptives please see section 2 “What you need to know before you take Gedarel extra”.

*Very common (may affect more than 1 in 10 people):* irregular bleeding.

*Common (may affect up to 1 in 10 people):* depression, mood altered, headache, dizziness, nervousness, nausea, abdominal pain, acne, tender breasts, breast pain, absence of menstruation, painful menstruation, pre-menstrual syndrome (physical and emotional problems before the start of menstruation), weight gain.

*Uncommon (may affect up to 1 in 100 people):* fluid retention, decreased sexual desire, migraine, impaired hearing (otosclerosis), high blood pressure, diarrhoea, vomiting, rash, nettle-rash (urticaria), breast enlargement.

*Rare (may affect up to 1 in 1,000 people):* hypersensitivity, increased sexual desire, eye irritation due to contact lens, skin disorders (erythema nodosum - a skin disease associated with joint pain, fever, hypersensitivity, or infection, and characterized by small, painful, pink to blue nodules under the skin and on the shins that tend to recur, erythema multiforme - a skin disease characterized by solid raised spots on the skin or fluid-filled blisters lesions and reddening or discoloration of the skin often in concentric zones about the lesions), chloasma (discolouration of the skin, so called “pregnancy patches”), vaginal discharge, breast discharge and weight loss.

Harmful blood clots in a vein or artery for example:

- in a leg or foot (i.e. DVT)
- in a lung (i.e. PE)
- heart attack
- stroke
- mini-stroke or temporary stroke-like symptoms, known as a transient ischaemic attack (TIA)
- blood clots in the liver, stomach/intestine, kidneys or eye.

The chance of having a blood clot may be higher if you have any other conditions that increase this risk (see section 2 for more information on the conditions that increase risk for blood clots and the symptoms of a blood clot).

#### **Reporting of side effects**

If you get any side effects, talk to your doctor or pharmacist. This includes any possible side effects not listed in this leaflet. You can also report side effects directly (see details below). By reporting side effects you can help provide more information on the safety of this medicine. Reports may be made by following the links to the online reporting option accessible from the HPRA homepage, or by completing the downloadable report form also accessible from the HPRA website.

Website: [www.hpra.ie](http://www.hpra.ie)

## **5. How to store Gedarel extra**

Keep this medicine out of the sight and reach of children.

Do not use this medicine after the expiry date (EXP.) which is stated on the package. The expiry date refers to the last day of that month.

Store below 30°C. Store in the original package.

Do not throw away any medicines via wastewater or household waste. Ask your pharmacist how to throw away medicines you no longer use. These measures will help protect the environment.

## **6. Contents of the pack and other information**

### **What Gedarel extra contains**

The active substances are ethinylestradiol and desogestrel. One film-coated tablet contains 30 micrograms ethinylestradiol and 150 micrograms desogestrel.

The other ingredients are:

Tablet core: Potato starch; stearic acid; all-rac-alpha-tocopherol; lactose monohydrate; magnesium stearate; silica colloidal anhydrous; povidone K 30.

Tablet coating: Hypromellose; Macrogol 6000; propylene glycol

### **What Gedarel extra looks like and contents of the pack**

White, or almost white, round shaped, biconvex film-coated tablets of 6 mm diameter, with P8 sign on one side and RG sign on other side.

Each box contains 1, 3, 6 or 13 calendar pack(s) of 21 film-coated tablets.

Not all pack sizes may be marketed.

### **Marketing Authorisation Holder and Manufacturer:**

Gedeon Richter Plc.

1103 Budapest, Gyömrői út 19-21.

Hungary

**This leaflet was last revised in November 2023.**