

# Summary of Product Characteristics

## 1 NAME OF THE VETERINARY MEDICINAL PRODUCT

Deltadot 10 mg/ml Pour-on Solution for Cattle and Sheep

## 2 QUALITATIVE AND QUANTITATIVE COMPOSITION

Each ml contains

### Active Substance:

Deltamethrin 10.0 mg

For the full list of excipients, see section 6.1.

## 3 PHARMACEUTICAL FORM

Pour-on Solution.

A clear pale gold oily liquid.

## 4 CLINICAL PARTICULARS

### 4.1 Target Species

Cattle and sheep.

### 4.2 Indications for use, specifying the target species

On cattle: For the treatment and prevention of infestations by both sucking and biting lice, including *Bovicola bovis*, *Solenopotes capillatus*, *Linognathus vituli* and *Haematopinus eurysternus*. Also as an aid in the treatment and prevention of infestations by both biting and nuisance flies including *Haematobia irritans*, *Stomoxys calcitrans*, *Musca* species and *Hydrotaea irritans*.

On sheep: For the treatment and prevention of infestations by ticks *Ixodes ricinus* and by lice (*Linognathus ovillus*, *Bovicola ovis*), keds (*Melophagus ovinus*) and for the treatment of established blowfly strike (usually *Lucilia* spp.).

On lambs: For the treatment and prevention of infestations by ticks *Ixodes ricinus* and by lice *Bovicola ovis*.

### 4.3 Contraindications

Do not use on convalescent or sick animals.

Do not use in cases of hypersensitivity to the active substance or to any of the excipients.

Extra-label use of the product in the non-target species dogs and cats can lead to toxic neurological signs (ataxia, convulsions, tremors), digestive signs (hypersalivation, vomiting) and may be fatal.

Do not use in animals with extensive lesions of the skin.

### 4.4 Special warnings for each target species

The product will reduce the number of flies resting directly on the animal but it is not expected to eliminate all flies on a farm. Resistance to deltamethrin has been recognised and therefore the strategic use of the product should be based on local and regional epidemiological information about susceptibility of parasites, and used in association with other pest management methods.

Care should be taken to avoid the following practices because they increase the risk of development of resistance and could ultimately result in ineffective therapy:

- too frequent and repeated use of ectoparasiticides from the same class over an extended period of time;
- underdosing which may be due to underestimation of bodyweight, misadministration of the product or lack of calibration of the dosing device.

Cases of resistance to deltamethrin have been reported in stinging and nuisance flies in cattle and lice in sheep. To avoid resistance, the product should only be used if the susceptibility of the local fly population to the active substance is assured.

#### **4.5 Special precautions for use**

##### Special precautions for use in animals

The product is for external use only.

Do not apply on or near the animal's eyes and mucous membranes as Deltamethrin is an irritant.

Care should be taken to prevent animals grooming after administration of the product. Avoid use of the product during extremely hot weather and ensure animals have adequate access to water.

The product should only be administered onto undamaged skin as toxicity is possible due to absorption from major skin lesions. However, signs of local irritation may occur after treatment as skin may be already affected by infestation.

##### Special precautions to be taken by the person administering the veterinary medicinal product to animals

People with known hypersensitivity to the active substance or to any of the excipients should avoid contact with the veterinary medicinal product.

Personal protective equipment consisting of waterproof apron and boots and impervious gloves should be worn when either applying the product or handling recently treated animals.

Remove heavily contaminated clothing immediately and wash before re-use.

Wash splashes from skin immediately with soap and plenty of water.

Wash hands and exposed skin after handling this product.

In case of contact with eyes, rinse immediately with plenty of clean, running water and seek medical advice.

In case of accidental ingestion, wash out mouth immediately with plenty of water and seek medical advice and show the package leaflet or the label to the physician.

Do not smoke, drink or eat while handling the product.

This product contains deltamethrin which may produce tingling, itchiness and blotchy redness on exposed skin. If you feel unwell after working with this product, seek medical advice immediately and show the package leaflet or the label to the physician.

##### Other precautions

Deltamethrin is very toxic to dung fauna, aquatic organisms and honey bees, is persistent in soils and may accumulate in sediments.

The risk to aquatic ecosystems and dung fauna can be reduced by avoiding too frequent and repeated use of deltamethrin (and other synthetic pyrethroids) in cattle and sheep, e.g. by using only a single treatment per year on the same pasture.

The risk to aquatic ecosystems will be further reduced by preventing treated sheep from entering watercourses for one hour immediately after treatment.

#### **4.6 Adverse reactions (frequency and seriousness)**

Neurological signs (general agitation or prostration, tremors, abnormal movements) have been recorded. The frequency of these adverse reactions is very rare.

Skin disorders (squamosis, photosensitisation and pruritus) have been observed within 48 hours after treatment. The frequency of these adverse reactions is very rare.

The frequency of adverse reactions is defined using the following convention:

- very common (more than 1 in 10 animals treated displaying adverse reaction(s))
- common (more than 1 but less than 10 animals in 100 animals treated)
- uncommon (more than 1 but less than 10 animals in 1,000 animals treated)
- rare (more than 1 but less than 10 animals in 10,000 animals treated)
- very rare (less than 1 animal in 10,000 animals treated, including isolated reports).

#### **4.7 Use during pregnancy, lactation or lay**

The safety of the veterinary medicinal product has not been established during pregnancy and lactation.

Laboratory studies in rats and rabbits have not produced any evidence of teratogenic effects.

Use only according to a benefit/risk assessment by the responsible veterinarian.

#### 4.8 Interaction with other medicinal products and other forms of interactions

Do not use with any other insecticide or acaricide.

The toxicity of deltamethrin is enhanced in combination with organophosphorous compounds, in particular.

#### 4.9 Amounts to be administered and administration route

For external use. Pour-on application.

Dose:

Cattle: 100 mg of deltamethrin per animal, corresponding to 10 ml of the product.

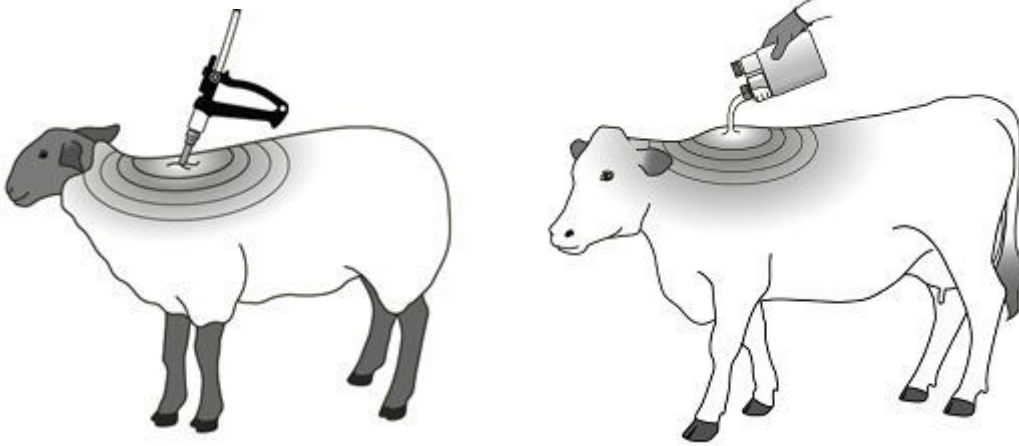
Sheep: 50 mg of deltamethrin per animal, corresponding to 5 ml of product.

Lambs (under 10 kg bodyweight or 1 month of age): 25 mg of deltamethrin per animal, corresponding to 2.5 ml of product.

The product must be applied without dilution to the mid-point of the shoulders as shown in the diagrams below.

For treatment and prevention of infestations by ticks, keds and lice on sheep, the fleece should be parted and the product applied to the skin of the animal. For maximum effectiveness it is advisable to:

- treat shortly after shearing (animals with short fleece),
- keep treated sheep separated from untreated sheep to avoid re-infestation



The duration of protection against flies is maintained for 4–6 weeks.

Lice on cattle: One application will generally eradicate all lice. Complete clearance of all lice may take 4 - 5 weeks during which time lice hatch from the eggs and are killed. A very few lice may survive on a small minority of animals.

Keds and lice on sheep: One application will reduce the incidence of a biting louse or ked infestation over a 4 - 6 week period after treatment.

Established blowfly strike on sheep: Apply directly to the maggot infected area as soon as the fly strike is seen. One application will ensure blowfly larvae are killed in a short time. In the case of more advanced strike lesions, clipping out the stained wool before treatment is advisable.

The influence of weather on the duration of efficacy has not been investigated.

The duration of the prevention period against *Musca* spp. may vary.

The product should be applied using an appropriate application device:

- For the 250 ml and 500 ml presentations a graduated chamber attached to the container is used.
- For the 1 litre and 2.5 litre presentations it is recommended to use an appropriate applicator.

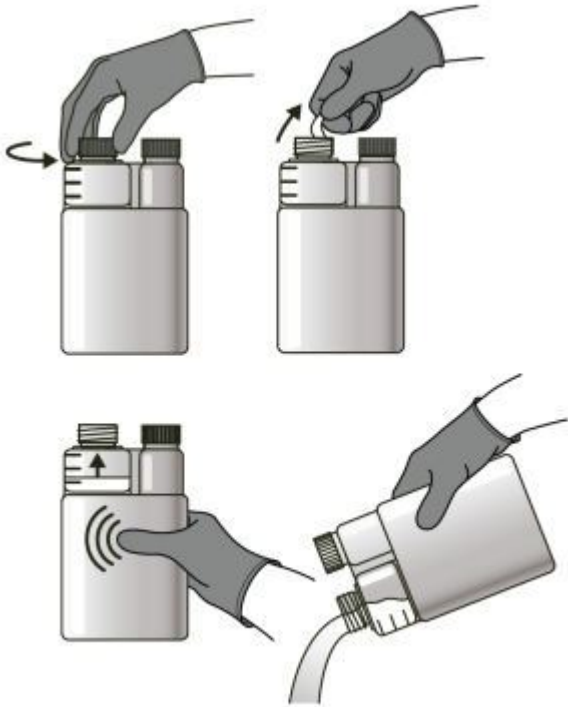
An appropriate applicator should comply with the following specifications:

- it should deliver doses of 5 ml and 10 ml.

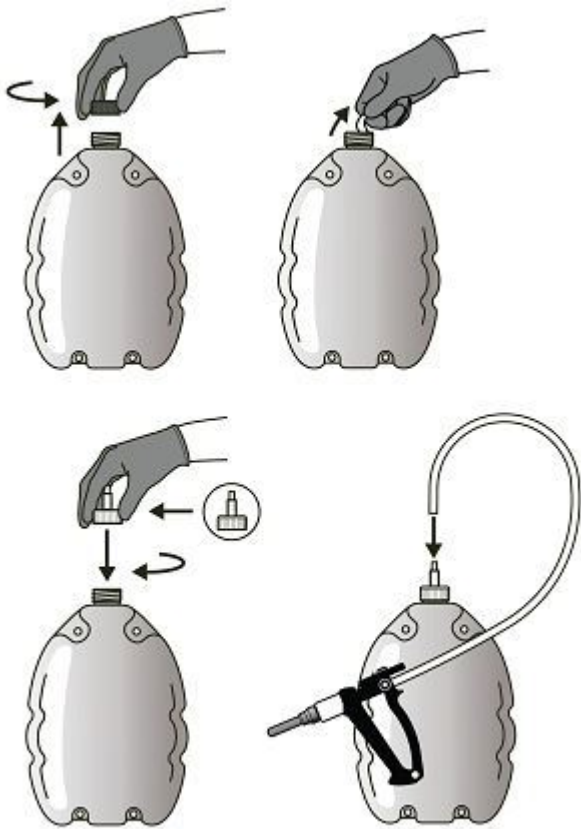
- it should be supplied with a flexible hose of internal diameter between 6 mm and 12 mm.

The recommended use of the application devices is illustrated on the following diagrams.

1. Use of the graduated chamber on the 250 ml and 500 ml containers:



2. Attaching the 1 and 2.5 litre containers to the appropriate applicator:



#### **4.10 Overdose (symptoms, emergency procedures, antidotes), if necessary**

Some adverse effects have been seen following overdose. These include paraesthesia and irritation in cattle, as well as intermittent or attempted urination in young lambs. These have been shown to be mild, transient and resolve without treatment.

#### **4.11 Withdrawal period(s)**

Cattle

Meat and offal - 18 days

Milk - zero hours

Sheep

Meat and offal - 35 days

Milk - 24 hours

Due to the significant likelihood of cross-contamination of non-treated animals with this product due to grooming (licking), treated animals should be kept separately from non-treated animals throughout the maximum withdrawal period. Non-compliance with this recommendation may lead to residues in non-treated animals.

### **5 PHARMACOLOGICAL or IMMUNOLOGICAL PROPERTIES**

ATCvet code: QP53AC11

Pharmacotherapeutic group: Ectoparasiticides, insecticides and repellents. Pyrethrins and pyrethroids.

#### **5.1 Pharmacodynamic properties**

The deltamethrin molecule belongs to the family of synthetic pyrethroids. It is characterized by its insecticidal and acaricidal activity, acting by altering the permeability of the sodium channel molecule causing hyperarousal, followed by paralysis (knockdown), with tremors and mortality of parasites. Two physiological mechanisms are likely to contribute to deltamethrin-resistance: mutation of the molecular deltamethrin target or genomic selection for increased expression of mitochondrial oxidase and esterase enzymes.

#### **5.2 Pharmacokinetic particulars**

After dermal application, deltamethrin is slightly absorbed through skin of cattle and sheep.

Pyrethroids are metabolised through oxidative and neurotoxic pathways.

The main route of excretion of the absorbed amount in the target animal is the faeces.

#### **5.3 Environmental properties**

Deltamethrin has the potential to adversely affect non-target organisms, both in water and in dung. Following treatment, excretion of potentially toxic levels of deltamethrin may take place over a period of 4 weeks. Faeces containing deltamethrin excreted onto pasture by treated animals may reduce the abundance of dung feeding organisms which may impact on the dung degradation.

Deltamethrin is very toxic to dung fauna, aquatic organisms and honey bees, is persistent in soils and may accumulate in sediments.

### **6 PHARMACEUTICAL PARTICULARS**

#### **6.1 List of excipients**

Triglycerides, medium chain.

## **6.2 Major incompatibilities**

None known.

## **6.3 Shelf-life**

Shelf life of the veterinary medicinal product as packaged for sale: 3 years.

Shelf life after first opening the immediate packaging: 3 months.

## **6.4 Special precautions for storage**

Store upright in the original container.

Keep the container in the outer carton in order to protect from light.

Keep away from food, drink and animal feeding stuffs.

## **6.5 Nature and composition of immediate packaging**

250 ml and 500 ml high density polyethylene flexipacks with twin neck dispenser, internal graduated calibration chamber and polypropylene heat-sealed screw cap.

1 litre and 2.5 litre high-density polyethylene flat bottom containers with polypropylene closures and induction heat-sealed wadding. A spouted cap is provided with the 1 litre and 2.5 litre presentations.

Not all pack sizes may be marketed.

## **6.6 Special precautions for the disposal of unused veterinary medicinal products or waste materials derived from the use of such products**

Any unused veterinary medicinal product or waste materials derived from such veterinary medicinal product should be disposed of in accordance with local requirements.

The product should not enter water courses as this may be dangerous for fish and other aquatic organisms. Do not contaminate surface waters or ditches with the product or used container.

Deltamethrin has been shown to be persistent in soil.

## **7 MARKETING AUTHORISATION HOLDER**

Bimeda Animal Health Limited  
2, 3 & 4 Airton Close  
Airton Road  
Tallaght  
Dublin 24  
Ireland

## **8 MARKETING AUTHORISATION NUMBER(S)**

VPA22033/008/001

## **9 DATE OF FIRST AUTHORISATION/RENEWAL OF THE AUTHORISATION**

Date of first authorisation: 02 September 2016

Date of last renewal: 25 June 2021

## **10 DATE OF REVISION OF THE TEXT**

June 2021